

# SHELTER

## CONTEMPORARY LIVING

### IN LUXURIOUS SANDS POINT

BY BETTINA MARKS

Designer Lisa Bernstein, founder of Lynbrook-based Molly Design, recently had the challenge of redecorating a large, luxurious home in Sands Point, a project that would require her to apply her passion for fine art, objects, furniture and textiles.

Bernstein, who lived and worked in residential interior design for 10 years in New York City before moving to Long Island and starting her firm in 1993, has an appreciation for all that is aesthetic and artfully creates environments that reflect this fervor. With each endeavor, she must interpret the client's needs and satisfy their tastes, part of the challenge. Every client is different.

For the last 10 years Bernstein has developed a following by word of mouth in some of Long Island's more prominent communities throughout Nassau, Suffolk and the tri-state area. Her work has appeared in two books, *Interior Designers Showcase of Color* by Melanie and John Aves (Rockport Publishers, 1994) and in *A Showcase of Interior Designers* (Vita Publishing, 1989). Some of her projects in Long Island include private residences in Lawrence, Woodmere, Sands Point, Old Brookville, Port Jefferson and summer homes in the Hamptons.

In the sprawling 3,500-square-foot expanded-ranch Sands Point home, the first floor houses the master bedroom suite and a luxurious bathroom that faces the back of the property, the kitchen, the den, powder room, dining room and adjacent living room, which looks out onto a magnificent pond through sliding glass doors, amidst 1.5 acres of wooded land that slopes upward at the end of the owners' property line. The children share a bathroom upstairs on the second floor and their bedrooms form a "u-shape" around their playroom. The couple has three children.

The husband is an avid gardener who created a masterful perennial and annual garden that surrounds the approximately 10-foot-by-10-foot pond and blooms in the summer with a multitude of many

varieties of ornamental grasses, Japanese flowers and a glorious selection of unusual roses, including rare breeds of "old roses," the man of the house has designed and created himself.

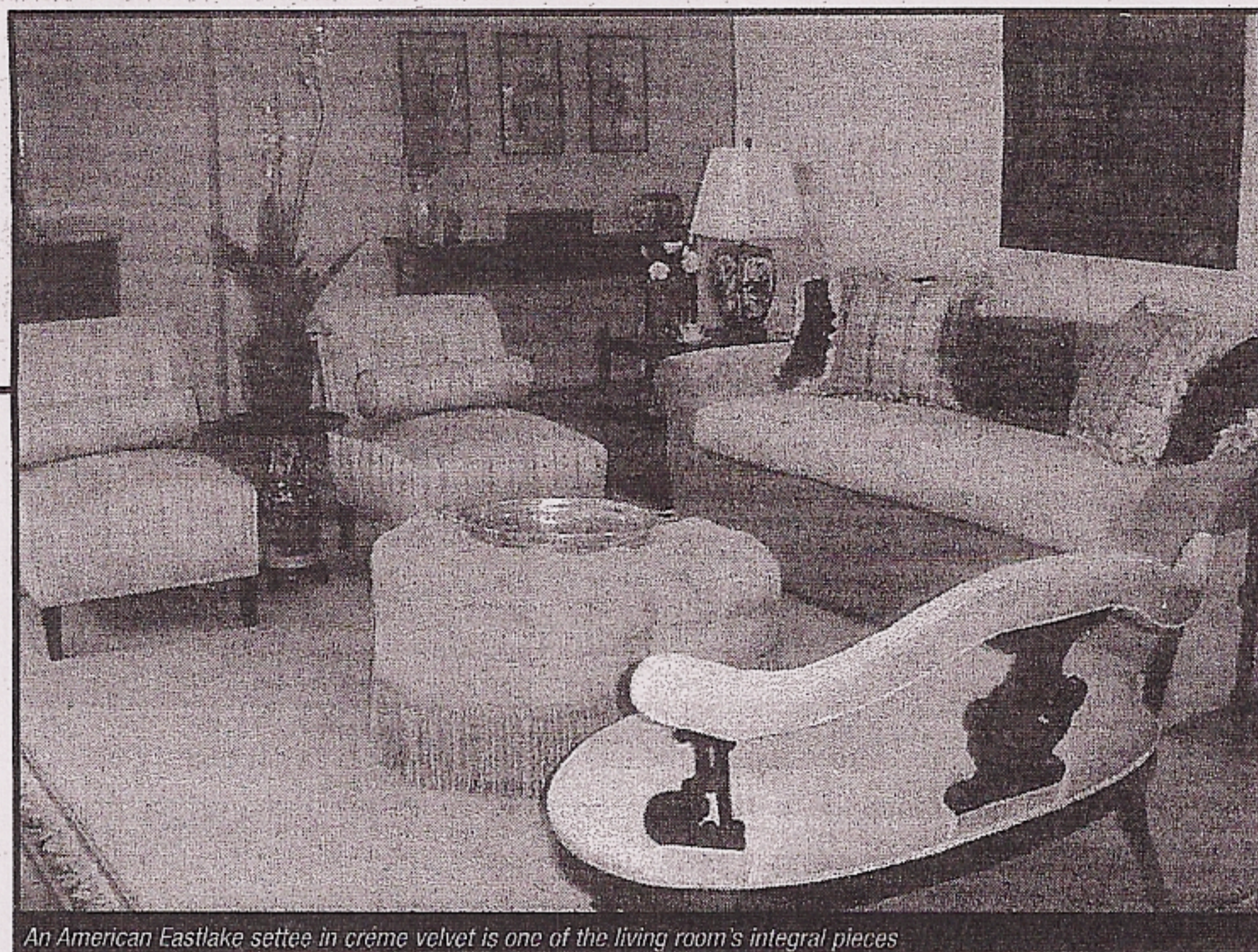
One helpful trait of Bernstein's is her ability to work in a variety of styles, which keeps the work fresh and exciting for both the client and designer. Her goal with each project is to be sure the finished product reflects the client's tastes, sensibilities and lifestyle and affords them the comfort, extravagance and functionality they desire.

Part of Bernstein's philosophy is to purchase the finest quality furniture that her client can afford; timeless, classic pieces, whether contemporary or traditional, made of fine, hard woods, which will ensure longevity with reasonable wear. If the client wants to change their home's look, either with a more "trendy" interpretation or a different style altogether in the future, the pieces she chooses will have passed the test of time and can be re-upholstered or updated accordingly. She is adept at and enjoys blending fine antiques from all over the world with contemporary pieces and skillfully manipulates the other design elements of color, line, form, fabrics and textures to embellish the theme.

Bernstein's challenge was to cater to her client's traditional tastes and their desire for a somewhat formal living room and dining room that would incorporate both English and French furnishings. The living



The dining room features hand-etched glass bell lanterns

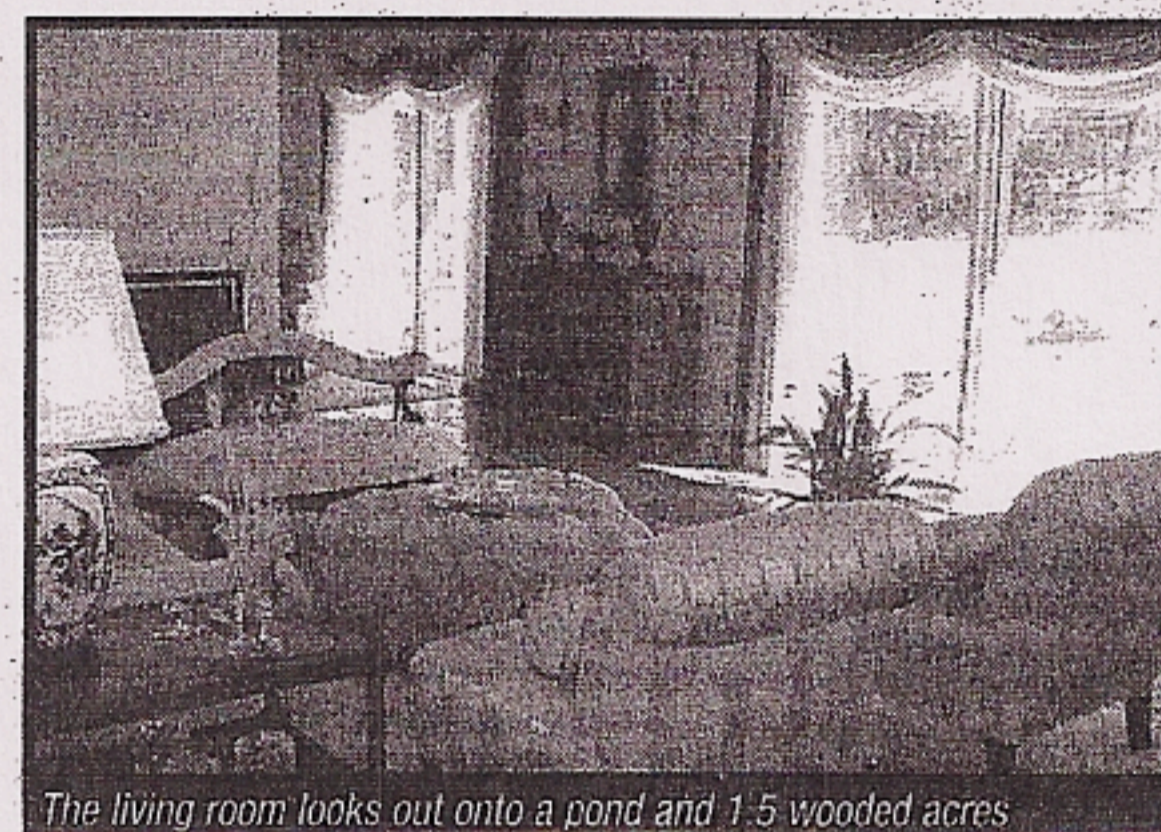


An American Eastlake settee in crème velvet is one of the living room's integral pieces

room needed to provide an atmosphere of "comfortable elegance" where they could enjoy their view of the ebullient vegetation and landscape that embraces the pond and their property. The architectural design of the house is contemporary and simple. The idea was to creatively marry these two concepts in delicate harmony.

She succeeded in both satisfying her client and complementing the architecture of the house and highlighting the pond. The contemporary terracotta floors throughout the dining room and living room were kept and provided an aura of earthiness amidst the traditional elements. Bernstein's strategy was to create a sleek floor plan and a soft, monochromatic color palette of crème, beige and taupe. She selected a few carefully chosen fine reproduction French furnishings and Asian antiques that blended beautifully with the contemporary structure of the home.

The sensual curvilinear properties of the furniture were kept clean and simple by using mostly solid but luxurious fabrics, including suede, velvet and silk, and by keeping the trim and skirting to a minimum to avoid a "fussy" look. In the living room is an American Eastlake settee upholstered in crème velvet, a tri-foil tufted ottoman in suede with bullion fringe trim that serves as a cocktail table, a pair of elegant clean-lined "slipper" chairs, a sofa with a seamless tight back (with minimal detail in the tiny rope trim and with a waterfall skirt added for a clean look) and blue and white porcelain Chinese lamps. A bordered, custom-made camel/beige sisal



The living room looks out onto a pond and 1.5 wooded acres

rug covers the living area, adding warmth to the terracotta floor.

In the dining room, hand-etched glass bell lanterns illuminate the mahogany dining room table, which rests on a wool leopard rug that keeps the room young and fresh. French Louis VX chairs adorn the table and a pair of custom-made host and hostess chairs in a light blue and brown toile print complete the tables' majestic look. A traditional Chinese landscape mural of birds and trees was custom painted to enhance the French-Asian theme and provide a peaceful, contemplative solace.

The two rooms are connected by a hand-painted blue dresser that sits on the wall between the large sliding glass doors of the living room and dining room, with candelabras and a romantic portrait of a woman above it framed in gold. It's a well-suited piece for decorative transition. The "comfortable elegance" of the redesigned rooms is greatly enhanced by the natural light that emanates through the expansive sliding glass doors. The look of luxury is everywhere. ●

For more information contact: Molly Design, c/o Lisa Bernstein, 80 Walnut Street, Lynbrook, (516) 599-7312.